

# Transportation Asset Management Webinar Series

Webinar 54

## **TAM Tools Webinar Miniseries**

### **Webinar 1: AASHTO Portals**

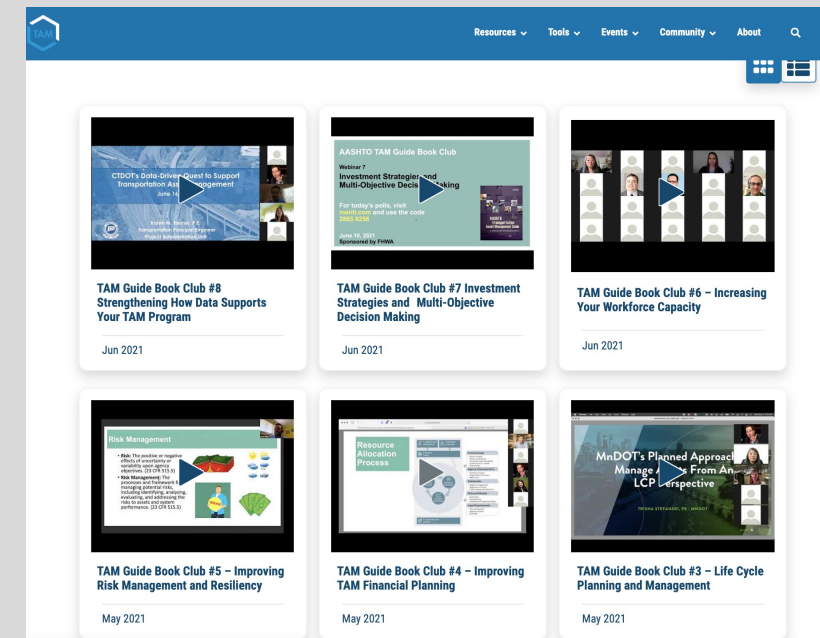
Sponsored by FHWA and AASHTO



**April 20, 2022**

# FHWA/AASHTO Asset Management Webinar Series

- The TAM Webinar Series has been running since 2012
- **Special miniseries on TAM Tools**
  - April 27: Management Systems
  - May 5: Other TAM Tools
  - May 12: Techniques
- We welcome ideas for future webinar topics and presentations
- Submit your questions via the webinar's chat feature



# Welcome

---

FHWA and the AASHTO Sub-Committee on Asset Management are pleased to sponsor this webinar series

- Sharing knowledge is a critical component of advancing asset management practice

# Webinar Objectives

---

- Raise awareness of the TAM Portal and other AASHTO Portals
- Understand some of the tools available on or from the Portals
- To hear from the TAM community

# Webinar Agenda

- 2:00 Welcome and Introduction**  
Tashia Clemons, FHWA, Matt Hardy, AASHTO, and Hyun-A Park, Spy Pond Partners
- 2:10 AASHTO Portals – Tour and Overview**  
Matt Hardy
- 2:35 TPM Portal Benchmarking Platform**  
Mark Egge, High Street Consulting
- 2:40 MODAT – Multi-Objective Decision Analysis Tool**  
Bill Robert, Spy Pond Partners, LLC
- 2:45 TPM Portal Regional Exchange Toolbox**  
Matt Haubrich, Iowa DOT
- 2:50 MnDOT TAM Communications Portal**  
Dave Solsrud, Minnesota DOT
- 2:55 Q&A and Dialogue**  
Matt Hardy
- 3:30 Wrap-Up**  
Matt Hardy



## AASHTO Transportation Management Hub

The Transportation Management Hub provides access to a suite of transportation management products: The AASHTO Transportation Performance Management Portal, The AASHTO Transportation Asset Management Portal, and the AASHTO Enterprise Risk Management Portal.

Performance Management

Asset Management

Risk Management

Supporting Sites



## Transportation Management Web Portals



### AASHTO Transportation Performance Management Portal

The TPM Portal was developed to showcase best practices, foster collaboration, and serve as a repository for TPM resources.

[Access the TPM Portal...](#)



### AASHTO Transportation Asset Management Portal

The TAM Portal is a searchable database of links to a wide range of resources related to transportation asset management.


[Access the TAM Portal...](#)



### AASHTO Enterprise Risk Management Portal

The ERM Portal is a basic risk management resource library for transportation practitioners.

[Access the ERM Portal...](#)



HOME

PEER SELECTIONCOMPARE ▾ABOUTFAQ

© REGISTER

LOG IN

Transportation Comparative  
Benchmarking Platform

ben(t)SHmärk

The ongoing process of comparing outcomes and practices to those of similar organizations, with the intention of continuously improving quality and performance.

This platform is intended to facilitate continuous benchmarking among state DOTs. Here, transportation practitioners can find appropriate peers, compare performance across a number of measures, and most importantly, connect with other practitioners to discover what works for performance improvement. Register for full site access, or browse publicly available performance and improvement information.



Find Peers



Compare Performance



Learn & Improve



**The Multiple Objective Decision Analysis Tool (MODAT)** helps support prioritization of a set of candidate projects using Multiple Objective Decision Analysis (MODA). After you create an account, you can log in to the system to start defining a set of investment objectives and measures for characterizing progress towards these objectives.

MODAT Sign In

Username

Password

[Forgot Password ?](#)

[Create an account](#)

Sign In





## The Regional Exchange Toolbox (RET)

Welcome to the TPM Regional Exchange Toolbox! This site provides resources, checklists and templates to help you plan a successful TPM regional exchange. The regional exchange toolbox is for those new to conducting regional exchanges, planning committees that want to be able to efficiently plan a regional exchange, leadership who are considering hosting or having staff participate in a TPM regional exchange, and agency staff who have been invited to participate in a TPM regional exchange.

Transportation Performance Management (TPM) Regional Exchanges are for sharing best practices, responses to emerging issues and lessons learned related to TPM topics of mutual interest. They are self-facilitated events using guidance and resources that will be available in the Toolbox. An agency or group of agencies will be encouraged to use the Toolbox to design a Regional Exchange and implement it. The Toolbox could be used for both in-person and virtual events.

### Getting Started

There are several different ways to use the TPM Regional Exchange toolbox, depending on your experience designing and conducting regional exchanges. Feel free to read the guidance, review the sample documents, and use the templates that meet your needs and the needs of your Regional Exchange planning team:

- Use the index to access the resources by 1) pre-planning, 2) planning and implementation, and 3) post-event phases. You can also filter your search within each phase for sample documents or templates.
- Use the Search box to look for a specific resource.
- Click on Additional Resources to view a curated list of Regional Exchange and other Peer Exchange sample summary reports, sample presentation decks, research reports, and websites.

### Pre-Planning

start up to six months before the Regional Exchange





## MnDOT Transportation Asset Management Communications Portal

We would love to hear your suggestions and feedback, so please [Provide Site Feedback](#) for anything you think can be enhanced or improved!

### Library

A library of resources to help you with your TAM communication.

### Communication Plan

The full communication plan guiding MnDOT’s understanding of TAM and why it is important.

### Schedule

See all of the planned and completed communication events, and

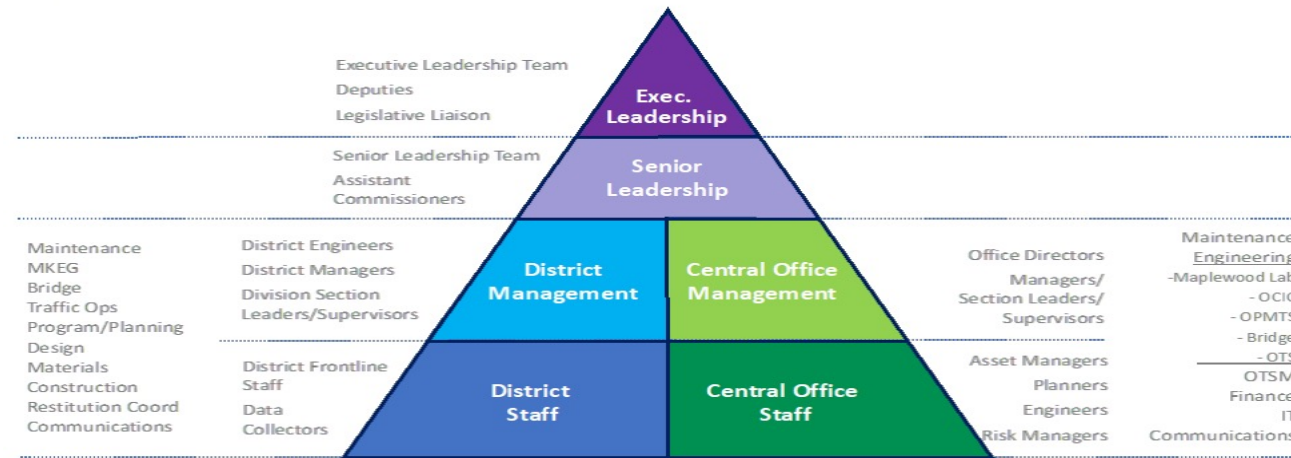
### Messages

Locate the resources that support the specific messages you want

# TAM Tools Webinar

April 20, 2022

An Adapted Presentation



## Maturing Asset Management at MnDOT: Executing the AMSIP Communications Plan

Dave Solsrud Asset Management Program Manager

*Discussion with MnDOT District Leadership Teams Spring 2022*

# 3 parts to this discussion

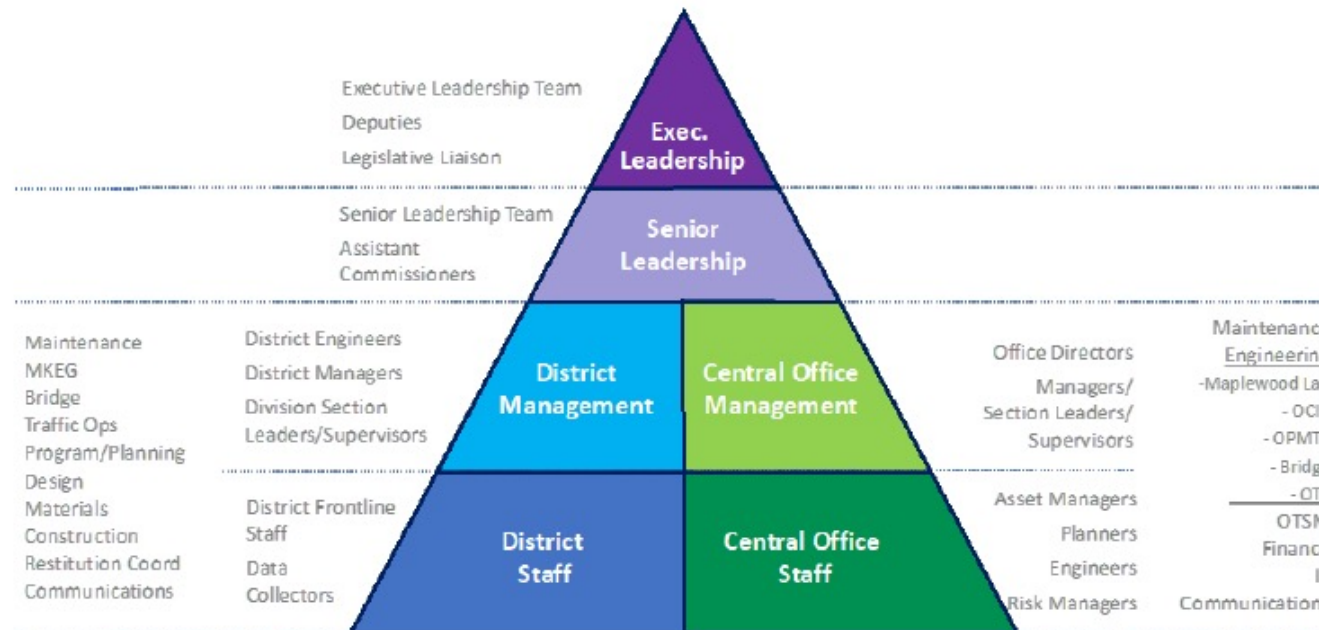
- Part One: the AMSIP Communications Plan
- **Part Two: Communications Content & Resources for Leaders**
- Part Three: The Ask

## AMSIP

- AMSIP conducted to address 5 areas
  - Asset Inventory Information
  - Geotech Asset Information
  - Preventive Maintenance Reliability
  - Asset Management Communications
  - Transportation Asset Management Plan
- Surveys
- Broad Follow-up Engagement meetings/calls
- Teams of Stakeholders
- Expert Consultants
- Collaborative
- AMSIP adopted by SLT 9/7/2021

# Audiences

- Effort to Simplify
  - Gross Categorization by Role in the Agency
- Effort to Group Messages
  - Universal Messages
  - Role Specific Info Needs





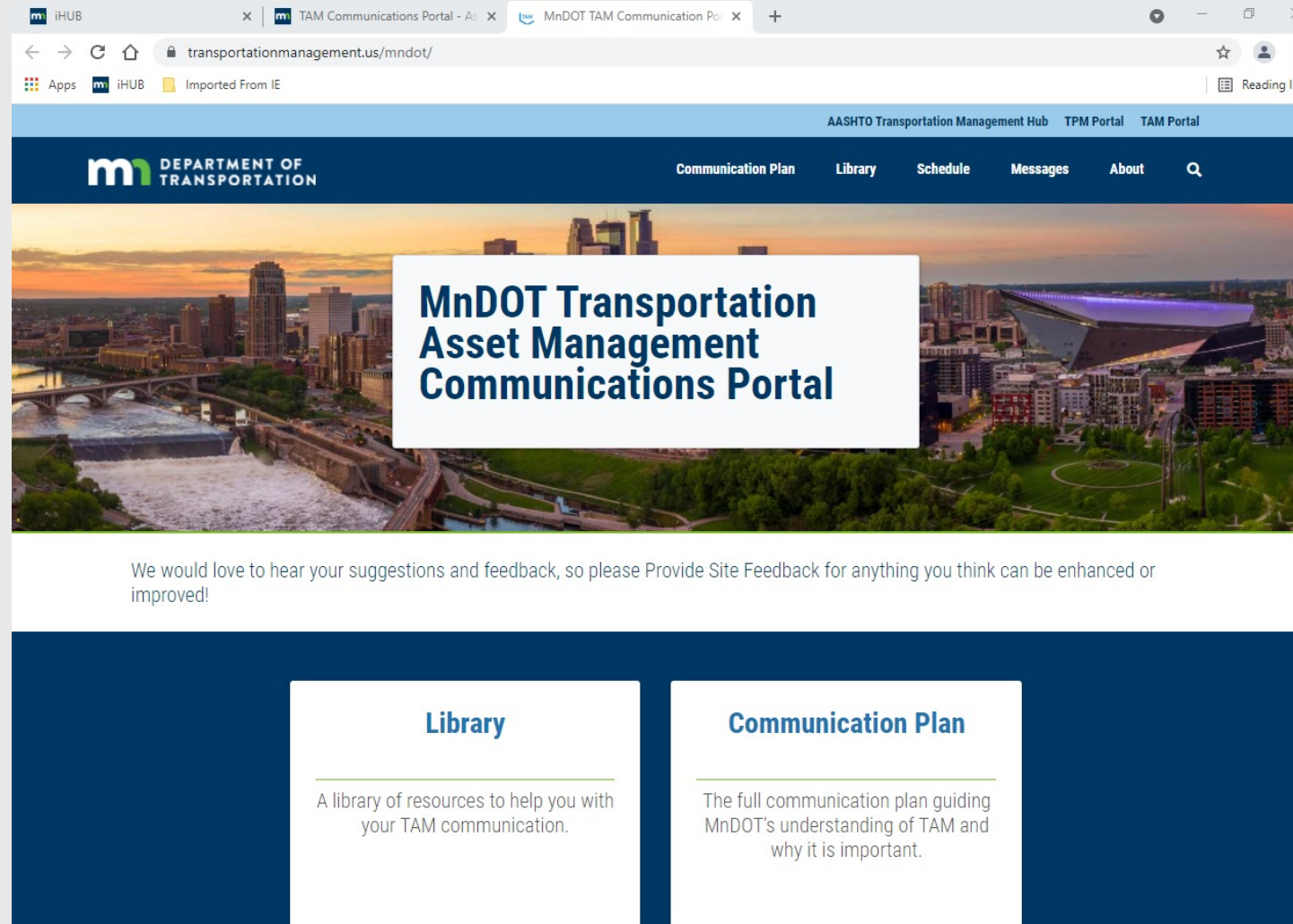
# Part One: The AMSIP Communications Plan

## The Approach – Categorize Information Needs:

- **General Asset Management Knowledge** – Messaging that builds general knowledge and support for asset management.
- **TAMS Data** – The importance of quality data and the benefits realized from the use of quality data.
- **Decision Making** – Information that demonstrates the importance of using TAMS data and asset management principles to guide *work planning*, to understand *trade-offs* in budget-setting activities, and to *manage performance, minimize Life-cycle costs* and extend *service life*.
- **TAMP Implementation** – Support the on-going implementation of the TAMP at MnDOT.
- **Coordination With External Stakeholders** – Information for MnDOT's use in communicating asset management information to external stakeholders.

# Part Two: Resources

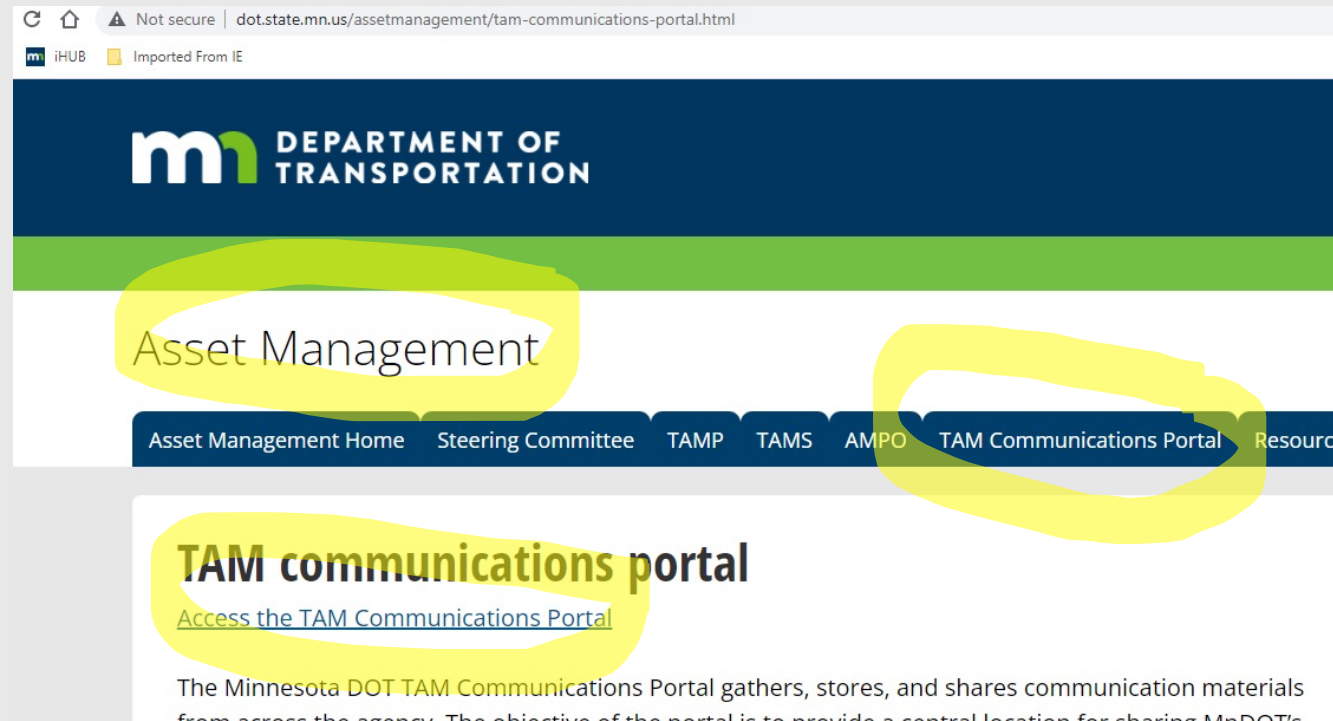
- Resources:





# Part Two: Resources

- TAM Communications Portal – ihub A-Z



# Part Two: Resources

Browser tabs: iHUB, TAM Communications Portal - As, Communication Library - MnDOT, Communication Library - MnDOT, AMSIP Final Plan - MnDOT TAM, This is your reminder that block

Address bar: transportationmanagement.us/mndot/communication-library/

Page Title: MnDOT TAM Communication Portal

## Library

### Search Filters

#### Messages

- ☐ Benefits of Quality Data (21)
- ☐ How the TAMP Reduces Risk (12)
- ☐ MnDOT Data Driven Approach (18)
- ☐ MnDOT Strategic Priorities and TAM (25)
- ☐ New TAMS Data Requirements (17)
- ☐ Taking Care of What We Have (14)
- ☐ TAM Communication Resources (12)
- ☐ Understanding Long Term Impacts (13)
- ☐ Understanding Roles and Responsibilities (19)
- ☐ Value of Data and Tools (26)

#### Messenger

- ☐ AMPO (36)
- ☐ Central Office Managers (3)
- ☐ Central Office Staff (1)
- ☐ District Managers (15)
- ☐ District Staff (2)
- ☐ Executives/Senior Leadership (3)

#### Audience

- ☐ AMPO (5)
- ☐ Central Office Managers (8)
- ☐ Central Office Staff (9)
- ☐ District Managers (26)
- ☐ District Staff (25)
- ☐ Executives/Senior Leadership (23)


### Search

**Search** **Reset**

### Sort By

Publication Date | Newer first


Flyer/Handout



Asset Management Communications Considerations for Districts

Mar 2022


Flyer/Handout



Asset Management for Business Support/Administration Staff

Mar 2022


Flyer/Handout



Asset Management for Construction

Mar 2022


Flyer/Handout



Asset Management for Project Managers/Design Engineers

Mar 2022


Flyer/Handout



Asset Management for Hydraulics

Mar 2022

Flyer/Handout



Asset Management for Maintenance & Operations Staff

Mar 2022

Flyer/Handout

Mar 2022

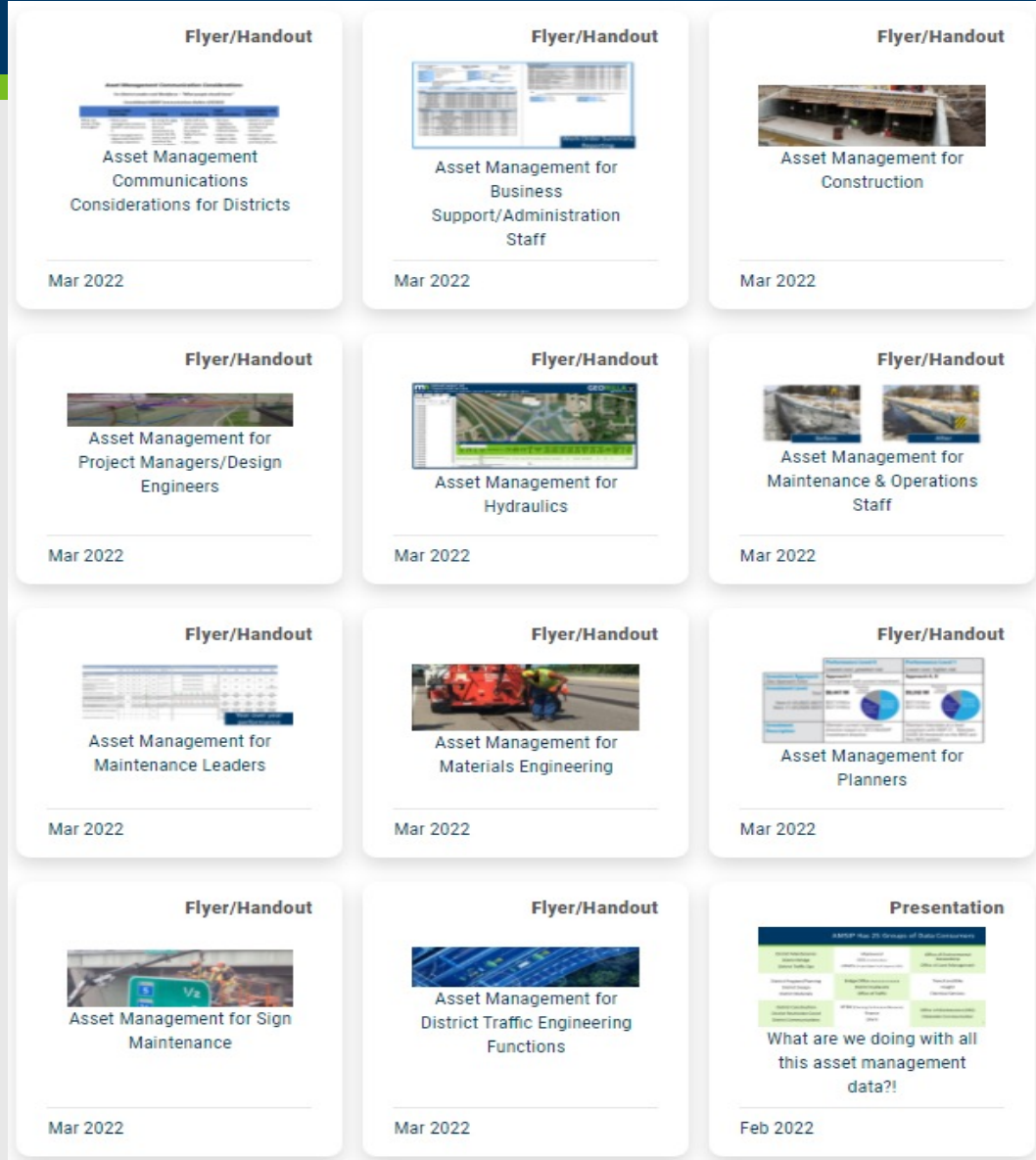
Flyer/Handout

Mar 2022

Flyer/Handout

Mar 2022

# Part Two: Resources



## Disciplines

- Business/Administrative
- Construction
- Project Mgt & Design
- Hydraulics
- Maintenance Staff
- Maintenance Leadership
- Materials Engineering
- Planners
- Sign Maintenance
- Traffic Engineering

## General

- Communications Bullets
- Data Usage “What are we...

## Other

- AMSIP
- Other .ppts
- Other docs

*Note: work in progress*

- What makes sense for district outreach?
- Supervisors?
- Support needed?
- Employee tailored messages (Sups know what their folks need to know)
- Portal
- AMSIP Comms chapter PDF?
- AMSIP whole doc?

# Thank you!

Dave Solrud

[Dave.Solrud@state.mn.us](mailto:Dave.Solrud@state.mn.us)

# Dialogue and Q&A

Submit your questions using the webinar's chat feature

# All webinars available online:

<https://www.tam-portal.com/event-directory/tam-webinars/>

## Save the Dates!

A bimonthly webinar series, Wednesdays at 2:00 PM EST

### Special Webinar Miniseries

#2. Wednesday April 27, 2p EDT: **Management Systems**

#3. Thursday May 5, 2p EDT: **Other TAM Tools**

#4. Thursday May 12, 2p EDT: **Techniques**

**More webinars to follow!**



For more information or to register:  
<https://www.tam-portal.com>